

## Mt. Holly MUA

### Process Description

#### Maple Avenue Plant (rated 3.0 MGD)

Grit & screen  
6 pass aeration basin  
Final clarification

#### Rancocas Road Plant (rated 3.0 MGD)

Screen, Aerated grit  
Primary settling  
High rate trickling filter  
Intermediate settling  
Aeration  
Final clarification

#### Combined Effluent

Tertiary disc filtration  
Disinfection  
Post aeration

Key Parameters	Influent	Effluent
CBOD <sub>5</sub>	266	1.7
TSS	610	1.8
DO	0.8	8.0
NH <sub>3</sub>	50	0.8

#### Cost Considerations

2016 NaClO = \$43,455	NaHSO <sub>3</sub> = \$45,481	Total = \$88,936
7/10/2017 – 4/30/2017 CH <sub>3</sub> CO <sub>3</sub> H = \$45,000		Annualized = \$56,842
		Potential savings = 36%

Industrial contribution: 1% (active landfill leachate)







Mt. Holly MUA Peracetic Acid Dosing System (temporary)





Mt. Holly MUA Peracetic Acid Dosing System (temporary)

Pump: Jesco Perido Peristaltic

Pump Tubing: 1/8" Floprene

Inverter: Lense ACTech SM Vector

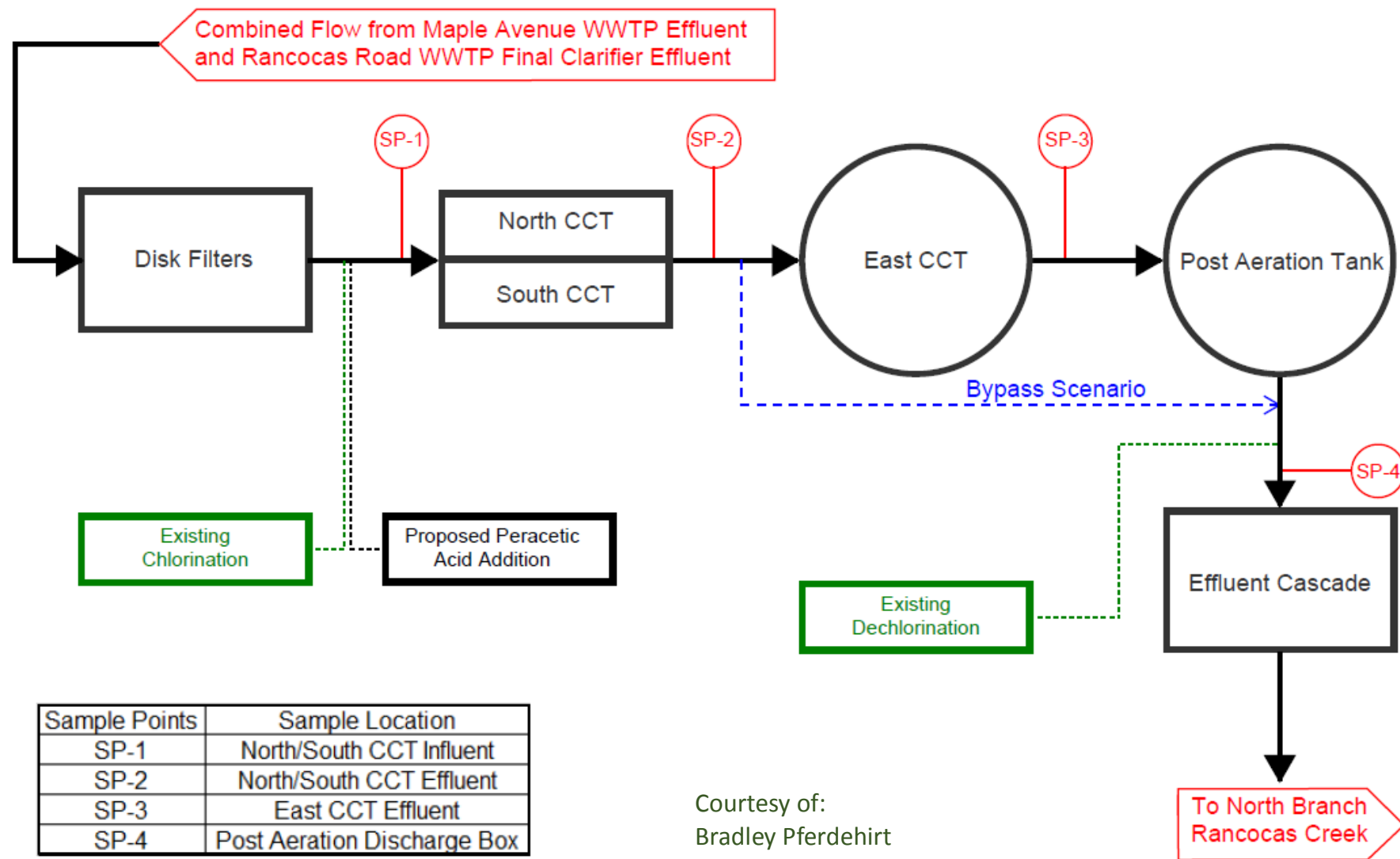




Mt. Holly MUA Peracetic Acid Application Point (temporary)  
1/8" 316L SS Tubing

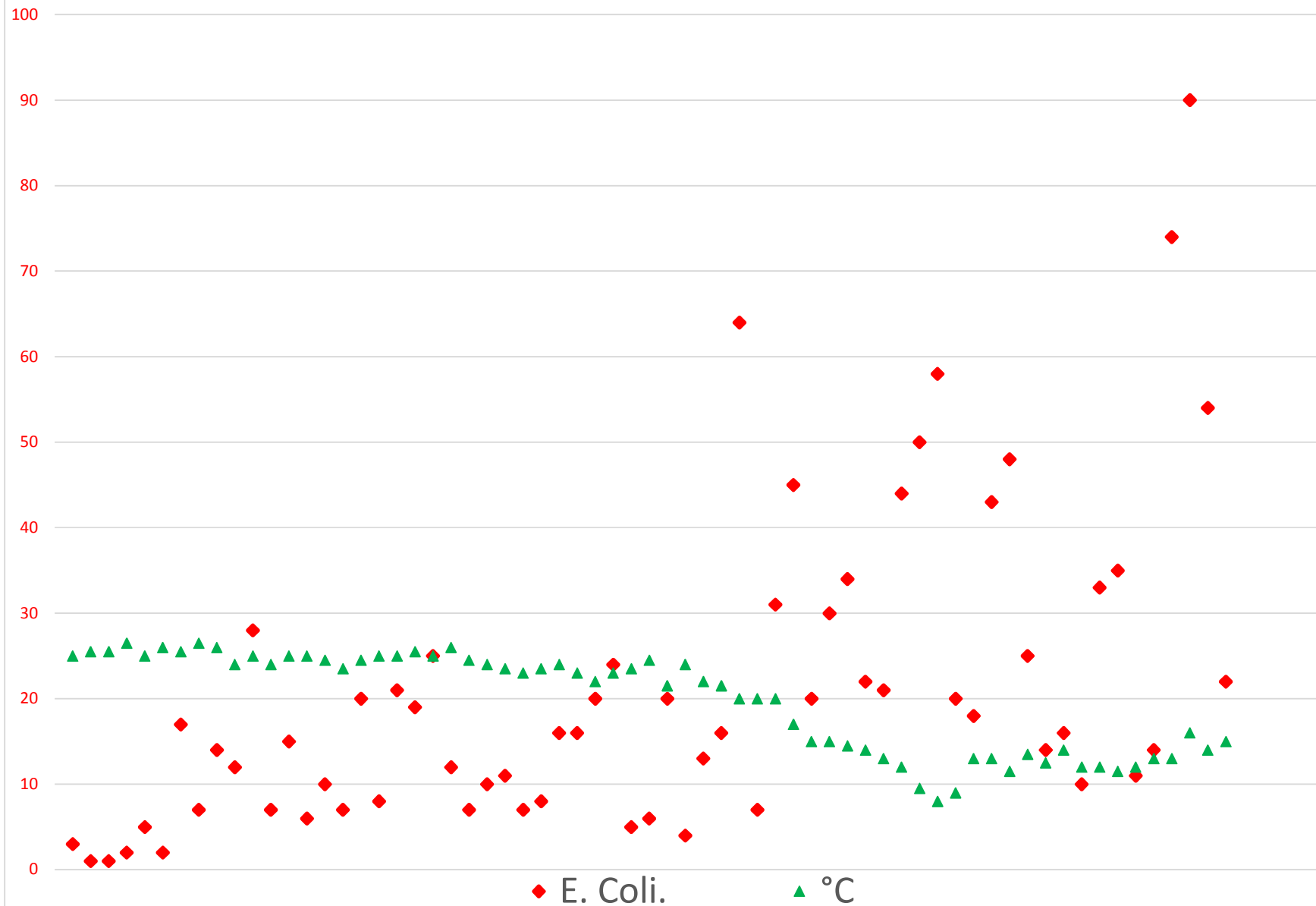


# Mount Holly Water Pollution Control Facility Peracetic Acid Disinfection Study Flow Schematic and Sampling Locations

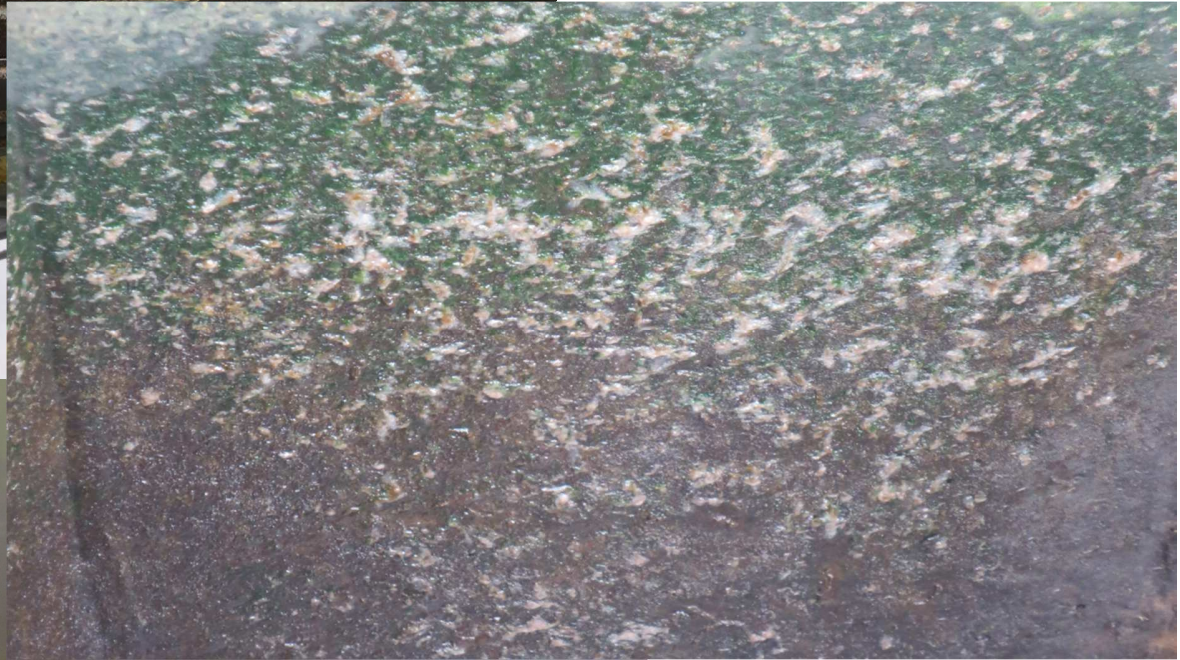


Courtesy of:  
Bradley Pferdehirt  
Pennoni Associates

PAA Efficacy Relative to Temperature







## MHMUA – PERACETIC ACID 15% PPE SELECTION CHART

### **DANGER**

**CORROSIVE TO SKIN, EYES AND MUCOUS MEMBRANES**  
**WEAR PERSONAL PROTECTIVE EQUIPMENT AT ALL TIMES**  
**SEEK IMMEDIATE EMERGENCY MEDICAL ATTENTION**

#### **Irreversible eye damage**

##### **BLINDNESS**

- Rinse cautiously with water and under the eyelids for at least 15 minutes
- Remove contact lenses, if present and easy to do then continue rinsing

#### **Irreversible skin burns**

##### **SEVERELY IRRITATING & CORROSIVE**

- Immediately remove all contaminated clothing
- Wash with soap and water
- Rinse with plenty of water/shower

#### **Harmful if inhaled**

##### **WILL IRRITATE NOSE, THROAT AND LUNGS**

- Move to fresh air keep comfortable for breathing
- If breathing difficulty or discomfort occurs and persists
- If breathing is irregular
- Administer artificial respiration if needed

#### **Harmful if swallowed**

- Rinse mouth
- **DO NOT INDUCE VOMITING**





Robert Maybury, Executive Director

609-267-0015

[MayburyB@mhMua.com](mailto:MayburyB@mhMua.com)

Joel Hervey, Operations Superintendent

609-267-1110

[HerveyJ@mhMua.com](mailto:HerveyJ@mhMua.com)

Adam Holba, Lead Operations Supervisor

609-267-1110

[HolbaA@mhMua.com](mailto:HolbaA@mhMua.com)

David Reich, Compliance Manager

609-267-1110

[ReichD@mhMua.com](mailto:ReichD@mhMua.com)

MHMUA.com